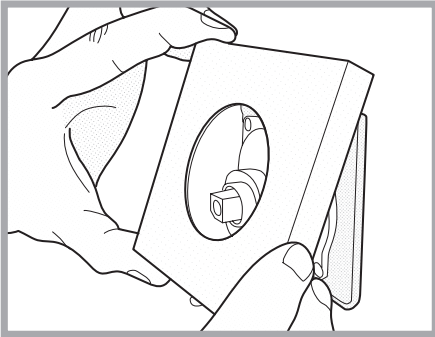


Control Trim Kit Installation Single/Dual/Remote Installation guide



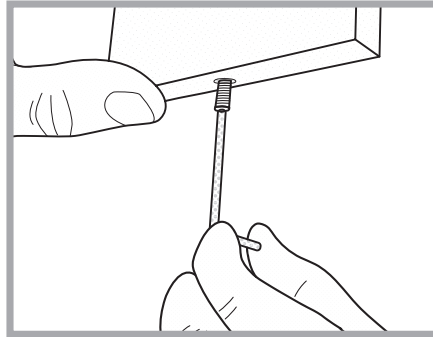
Warning! Before installing or replacing either the temperature or flow control dial, ensure the power to the digital valve is switched off. The installation must be carried out in accordance with these instructions and the instructions provided with the digital valve & controller.

Step 1



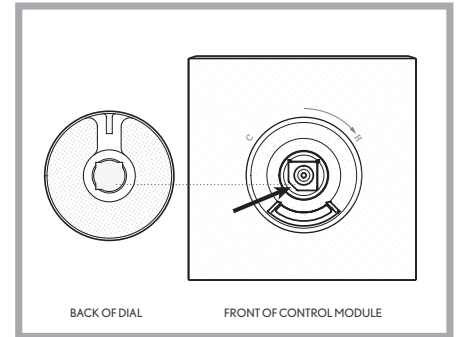
Place the controller trim plate over the controller module and ensure the rear edge is flushing to the surface of the wall. If fitting the optional remote, place the remote trim plate over the remote module and ensure the rear edge is flush to the wall.

Step 2



Tighten the grub screw on the bottom of the controller trim plate to fix securely against the controller module. Repeat for the optional remote if applicable

Step 3

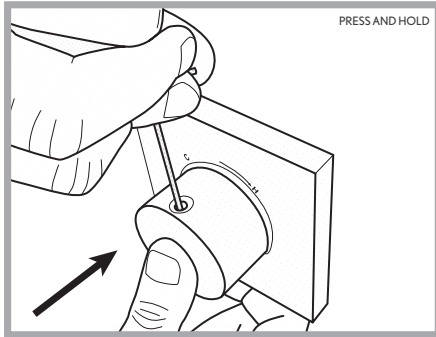


Before fitting the separately supplied control dial ensure the location feature on the control module is orientated as shown

CLEANING

Many household cleaners contain abrasives and chemical substances, and should not be used. Only use a mild washing up detergent or soap solution, and then wiped dry using a soft cloth.

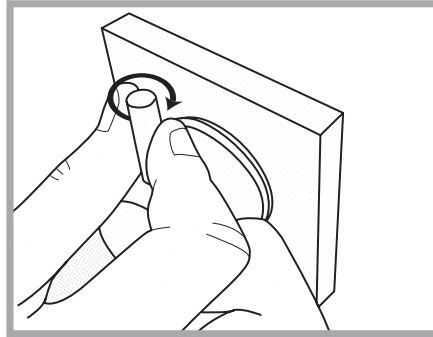
Step 4



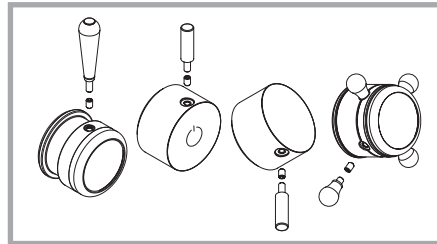
Warning! The control dial should fit to the control module location feature with ease. Check the control dial is in the correct orientation to the location feature on the control module and press firmly.

When fully engaged, press and hold controller dial and tighten the retaining grub screw (pre-fitted inside the hole on the side of the control dial) with the provided hex key.

Step 5



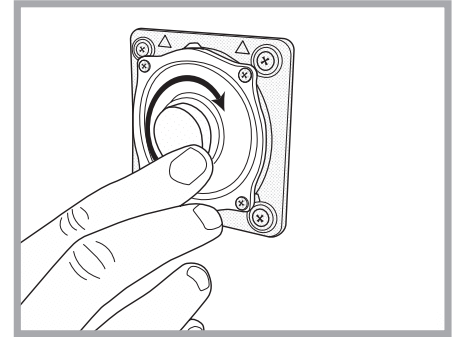
Depending on the chosen controller style, the control dial will be supplied with either a lever or a chrome cap to cover the hole for the grub screw. Screw in the lever or push fit the protective cap as required. The lever should be screwed in place by hand to avoid damage.



SERVICING / CONTACT INFORMATION

In the unlikely event that you are experiencing difficulties with your new digital shower system, please contact your local retailer or refer to your installation guide for contact information.

Optional Remote



If fitting the optional remote, screw the remote button into the front of the remote module by hand. Follow steps to install Trim plate as above. Follow from step 1 to install Trim Plate.

Note for Dual Controllers: Temperature Control with the  on the front are to be installed on the top of the controller.